



DEPARTMENT OF COMPUTER SCIENCE AND ENGINEERING

TECHNICAL MAGAZINE

ACADEMIC YEAR 2025-2026 (ODD SEMESTER)

Issue 1 [Dec, 2025]



Message from the Head of Department

The Department of Computer Science and Engineering was established in the year 2009 and presently it offers Under Graduate programme in Computer Science and Engineering with a student intake of 90 and Post Graduate programme in Computer Science and Engineering with a student intake of 9. The Department has well qualified faculty and supporting staff in areas such as Networking, Artificial Intelligence, Programming languages and Machine Learning. The department's primary objective is to deliver world-class quality education in the field of Computer Science. Equipped with computers featuring fully networked terminals with the latest hardware and software configurations, the department provides a conducive learning environment. Additionally, the department offers Internet connectivity with a bandwidth of 300 Mbps on a 1:1 ratio, ensuring seamless access to online resources. These facilities empower students to explore and innovate in the ever-evolving field of Computer



Prof. M. Nisha, M.E., (Ph.D.),
Assistant Professor (S.G) & HOD (i/c)
Department of Computer Science and Engineering

VISION AND MISSION OF THE DEPARTMENT

Vision of the Department

To develop competent Computer Science Engineers, capable of meeting the challenges in the globalized technological society.

Mission of the Department

DM 1: To provide good quality academic and infrastructure environment that would help the students acquire deep knowledge and skills in Computer Science and Engineering.

DM 2: To prepare students for careers in IT Industry, encourage Entrepreneurship and mould them to take leadership for the betterment of the society.

DM 3: To produce competent graduates with human values, for carrying out research in cutting edge technologies in Computer Science and Engineering.

PROGRAM EDUCATIONAL OBJECTIVES (PEOs)

PEO 1: Prospective Career: To exhibit knowledge and skills in the various domain areas of Computer Science and Engineering with an awareness in different disciplines for a prospective career and to undertake novel research as per the needs of the society, government and industries.

PEO 2: Higher Education: To be strong in fundamentals of Computer Science and Engineering

for successfully pursuing higher education and research in reputed institutions.

PEO 3: Product Development: To apply their knowledge and innovative ideas to design and develop products in interdisciplinary areas for real time problems and to emerge as entrepreneurs.

PROGRAM SPECIFIC OUTCOMES (PSOs)

PSO 1 : Professional skills: Able to analyze and develop solutions to complex engineering problems in IT such as Operating Systems, Networks, Data Structure, Database Management Systems, Cloud Computing and Mobile computing, to meet the society and industrial needs.

PSO 2 : Competency: Able to solve the industry problems with knowledge in recent technology and tools such as Machine Learning, Internet of Things, Oracle, Java Programming etc with good team skills and ethical values.

PROGRAM OUTCOMES (POs)

PO 1: Engineering knowledge: Apply the knowledge of mathematics, science, engineering fundamentals and an engineering specialization to the solution of complex engineering problems.

PO 2: Problem analysis: Identify, formulate, review research literature and analyze complex engineering problems reaching substantiated conclusions using first principles of mathematics, natural sciences and engineering sciences.

PO 3: Design/development of solutions: Design solutions for complex engineering problems and design system components or processes that meet the specified needs with appropriate consideration for the public health and safety and the cultural, societal and environmental considerations.

PO 4: Conduct investigations of complex problems: Use research-based knowledge and research methods including design of experiments, analysis and interpretation of data and synthesis of the information to provide valid conclusions.

PO 5: Modern tool usage: Create, select and apply appropriate techniques, resources and modern engineering and IT tools including prediction and modeling to complex engineering activities with an understanding of the limitations.

PO 6: The Engineer and Society: Apply reasoning informed by the contextual knowledge to assess societal, health, safety, legal and cultural issues and the consequent responsibilities relevant to the professional engineering practice.

PO 7: Environment and Sustainability: Understand the impact of the professional engineering solutions in societal and environmental contexts and demonstrate the knowledge of and need for sustainable development.

PO 8: Ethics: Apply ethical principles and commit to professional ethics and responsibilities and norms of the engineering practice.

PO 9: Individual and Team work: Function effectively as an individual and as a member or leader in diverse teams and in multidisciplinary settings.

PO 10: Communication: Communicate effectively on complex engineering activities with the engineering community and with society at large, such as, being able to comprehend and write effective reports and design documentation, make effective presentations and give and receive clear instructions.

PO 11: Project management and Finance: Demonstrate knowledge and understanding of the engineering and management principles and apply these to one's own work, as a member and leader in a team, to manage projects and in multidisciplinary environments.

PO 12: Life-long learning: Recognize the need for and have the preparation and ability to engage in independent and life-long learning in the broadest context of technological change.

MESSAGE FROM THE EDITORIAL TEAM

We are delighted to present this latest edition of our magazine, a thoughtfully curated collection of articles that explore some of the most influential and forward-looking developments in Computer Science, Engineering and Artificial Intelligence. As technology continues to evolve at an unprecedented pace, this issue is dedicated to examine the innovations that are redefining how we design systems, interact with machines and shape the future of our digital society. In this edition, we begin with AI-Powered Digital Twins, exploring how virtual replicas of physical systems are revolutionizing smart manufacturing and enabling intelligent, data-driven smart cities. We then delve into Neuromorphic Computing, a fascinating field inspired by the human brain, which promises ultra-efficient AI systems capable of learning and adapting with minimal energy consumption. Complementing this is our discussion on Federated Learning, a privacy-preserving approach that is redefining data security by enabling collaborative intelligence without compromising sensitive information.

Sustainability remains a critical global priority and our feature on Green Computing and Sustainable Data Centers highlights how innovative hardware, energy-efficient architectures and renewable integration are reducing the carbon footprint of modern technology. On the human machine frontier, Brain Computer Interfaces (BCI) showcase groundbreaking efforts to directly connect human intelligence with machines, opening new possibilities in healthcare, accessibility and cognitive enhancement. We also explore the expanding role of Blockchain Beyond Cryptocurrency, demonstrating its transformative impact on healthcare, supply chains and governance through transparency, trust and decentralization. The future of collective intelligence is examined through Autonomous Systems and Swarm Robotics, where

coordinated, self-organizing agents are redefining efficiency and resilience in complex environments.

In the realm of digital security, AI-Driven Cybersecurity addresses the urgent need for real-time threat prediction and prevention in an increasingly connected world. Our exploration of Metaverse Infrastructure sheds light on the technologies powering immersive virtual economies, digital ownership and next-generation social and economic interactions. Finally, we look ahead to The Quantum Internet, a revolutionary vision for ultra-secure global communication grounded in the principles of quantum mechanics. Through these articles, our aim is to inform, inspire and challenge our readers to think critically about the technologies shaping our future. Each contribution reflects the cutting edge of research and innovation, offering insights into both the opportunities and responsibilities that come with technological advancement. We hope this edition enriches your understanding and sparks meaningful curiosity as you navigate the dynamic landscape of modern technology. Thank you for your continued support and engagement, We are excited to share this journey of discovery and innovation with you.

Chief Editor:

Mrs. M. Nisha, HOD (i/c).

Faculty Advisors:

Mrs.S. Jeevitha, AP/CSE,

Mrs. M.S.Kavitha, AP/CSE,

Mrs. K. Gomathi, AP/ CSE,

Mrs. K. Malarvizhi, AP/ CSE,

Faculty Editor:

Mrs.J.Sapthika AP/CSE,

Student Editors:

Mr. A. Ragavan - IV B.E. CSE,

Mr. K. Ramamoorthy - III B.E. CSE,

Mr. P. Mouliswaran - II B.E. CSE,

Design Team:

Mr. S. Anbuselvan - IV B.E. CSE.

Mr. K.S. Karventhan - II B.E. CSE,

TABLE OF CONTENTS

S. No.	TITLE	Page No.
1.	AI-POWERED DIGITAL TWINS: REVOLUTIONIZING SMART MANUFACTURING AND SMART CITIES.	7
2.	NEUROMORPHIC COMPUTING: MIMICKING THE HUMAN BRAIN FOR ULTRA-EFFICIENT AI SYSTEMS.	10
3.	FEDERATED LEARNING: PRIVACY-PRESERVING AI FOR THE NEXT GENERATION OF DATA SECURITY.	13
4.	GREEN COMPUTING AND SUSTAINABLE DATA CENTERS: REDUCING THE CARBON FOOTPRINT OF TECHNOLOGY.	16
5.	BRAIN-COMPUTER INTERFACES (BCI): BRIDGING HUMAN INTELLIGENCE AND MACHINES.	18
6.	BLOCKCHAIN BEYOND CRYPTOCURRENCY: TRANSFORMING HEALTHCARE, SUPPLY CHAINS and GOVERNANCE.	20
7.	AUTONOMOUS SYSTEMS AND SWARM ROBOTICS: THE FUTURE OF INTELLIGENT COORDINATION.	22
8.	AI-DRIVEN CYBERSECURITY: PREDICTING AND PREVENTING DIGITAL THREATS IN REAL TIME.	24
9.	METAVESE INFRASTRUCTURE: BUILDING THE NEXT GENERATION OF VIRTUAL ECONOMIES.	26
10.	QUANTUM INTERNET: THE FUTURE OF ULTRA-SECURE GLOBAL COMMUNICATION.	28

AI-POWERED DIGITAL TWINS: REVOLUTIONIZING SMART MANUFACTURING AND SMART CITIES



The rapid advancement of digital technologies has led to the emergence of Digital Twins, a revolutionary concept that bridges the physical and digital worlds. A Digital Twin is a virtual representation of a physical object, system or process that continuously receives real-time data from its real-world counterpart through sensors, Internet of Things (IoT) devices and communication networks. When integrated with Artificial Intelligence (AI), Digital Twins evolve from static simulation models into intelligent, self-learning systems capable of prediction, optimization and autonomous decision-making. This fusion is transforming industries such as manufacturing and urban infrastructure, enabling smarter, safer and more sustainable operations.

In the modern era, industries and cities face increasing challenges such as rising operational complexity, energy inefficiency, rapid urbanization, environmental concerns and the need for real-time decision-making. Traditional systems often rely on reactive maintenance and historical data analysis, which limits their ability to respond proactively to failures or optimize performance dynamically. AI-powered Digital Twins address these limitations by continuously analyzing real-time data, learning patterns and simulating multiple scenarios before actual implementation. This capability significantly reduces risks, improves efficiency and enhances strategic planning.

In smart manufacturing, AI-powered Digital Twins play a crucial role in optimizing production processes, improving product quality and reducing downtime. Manufacturing

systems equipped with sensors generate massive volumes of data related to machine performance, temperature, vibration, energy consumption and production speed. AI algorithms process this data to detect anomalies, predict equipment failures and recommend maintenance schedules before breakdowns occur commonly known as predictive maintenance. This proactive approach minimizes unplanned downtime, reduces maintenance costs and extends the lifespan of industrial equipment. Additionally, digital twins enable manufacturers to simulate production line changes, test new materials and optimize workflows without disrupting real operations. This leads to faster innovation cycles, improved product quality and increased operational efficiency.

Beyond manufacturing, AI-powered Digital Twins are becoming a foundational element of smart cities. Urban environments are complex systems involving transportation, energy distribution, water management, waste handling and public safety. Managing such interconnected systems requires intelligent coordination and real-time adaptability. Digital Twins of cities integrate data from IoT sensors, surveillance systems, traffic signals, weather stations and citizen services to create a dynamic virtual city model. AI algorithms analyze this data to optimize traffic flow, reduce congestion, predict energy demand and improve emergency response planning. For example, traffic digital twins can simulate various traffic scenarios and suggest optimal signal timings to reduce congestion and carbon emissions.

The impact of AI-powered Digital Twins on sustainability is also significant. By enabling precise monitoring and optimization of resource usage, these systems support energy-efficient operations and reduced environmental impact. Smart grids powered by digital twins can balance renewable energy sources, predict power demand and prevent outages. In water management, digital twins help detect leaks, monitor water quality and optimize distribution. Such applications contribute to achieving sustainability goals and supporting climate-resilient urban development.

Furthermore, AI enhanced Digital Twins improve decision-making by enabling predictive and prescriptive analytics. Instead of reacting to problems after they occur organizations can simulate multiple future scenarios and choose the most effective strategies in advance. This capability is particularly valuable in disaster management, urban planning and large-scale infrastructure projects where errors can have severe consequences.

Despite their advantages, the implementation of AI-powered Digital Twins also presents challenges. These include data privacy and security concerns, high computational requirements, integration complexity and the need for standardized data models. However,

ongoing advancements in cloud computing, edge computing, 5G/6G connectivity and cybersecurity frameworks are steadily addressing these challenges, making Digital Twin technology more accessible and scalable.

In conclusion, AI-powered Digital Twins represent a transformative technological paradigm that is reshaping smart manufacturing and smart cities. By combining real-time data, advanced analytics and intelligent automation, they enable more efficient, resilient and sustainable systems. As digital infrastructure continues to evolve, AI-driven Digital Twins will play a crucial role in shaping the future of industrial innovation and urban development, paving the way toward smarter, safer and more sustainable societies.

Mr. A. Ragavan - IV B.E. CSE

NEUROMORPHIC COMPUTING: MIMICKING THE HUMAN BRAIN FOR ULTRA-EFFICIENT AI SYSTEMS.



The rapid growth of artificial intelligence (AI) has driven unprecedented advancements in data processing, automation and intelligent decision-making. However, conventional computing architectures based on the von Neumann model face critical limitations in terms of energy consumption, latency, scalability and real-time learning. As AI applications expand into areas such as autonomous systems, robotics, healthcare and edge computing, the demand for more efficient and adaptive computing paradigms has become increasingly urgent. Neuromorphic computing emerges as a revolutionary approach that seeks to mimic the structure and functionality of the human brain to achieve ultra-efficient, low-power and intelligent computation.

Neuromorphic computing is inspired by biological neural systems, particularly the way neurons and synapses process and transmit information through spikes or electrical impulses. Unlike traditional processors that separate memory and computation, neuromorphic systems integrate both within the same architecture, enabling parallel and event-driven processing. This brain-inspired design significantly reduces data movement, energy consumption and processing latency key challenges faced by modern AI systems. By emulating neural behaviors such as learning, adaptation and self-organization, neuromorphic systems offer a more natural and scalable approach to artificial intelligence.

The need for neuromorphic computing arises from the growing inefficiency of conventional AI hardware in handling real-time and edge-based applications. Modern deep learning models require massive computational power and energy, often relying on data centers with high operational costs and environmental impact. In contrast, neuromorphic chips operate at extremely low power levels while maintaining high computational efficiency. This makes them ideal for deployment in edge devices such as autonomous vehicles, drones, wearable healthcare devices and smart sensors, where power availability and real-time responsiveness are critical.

In neuromorphic systems, information is processed using spiking neural networks (SNNs), which more closely resemble the functioning of biological neurons. These networks process information only when significant events occur, rather than continuously processing data like traditional neural networks. This event-driven nature results in faster response times and reduced energy usage. Additionally, neuromorphic architectures support on-chip learning, allowing systems to adapt to new environments without relying heavily on cloud-based computation or large datasets.

The impact of neuromorphic computing is particularly significant in fields that require real-time intelligence and autonomy. In robotics, neuromorphic processors enable faster perception, adaptive motor control and improved interaction with dynamic environments. In healthcare, they support low-power wearable devices capable of continuous monitoring and early disease detection. In cybersecurity, neuromorphic systems enhance anomaly detection by recognizing unusual patterns with minimal latency. Furthermore, in smart cities and Internet of Things ecosystems, neuromorphic computing enables scalable and energy-efficient processing of massive sensor data streams.

Another major advantage of neuromorphic computing lies in its potential to advance artificial general intelligence (AGI). By more closely emulating biological cognition, neuromorphic systems can support lifelong learning, contextual awareness and decision-making under uncertainty capabilities that remain challenging for conventional AI systems. This opens new possibilities for human machine collaboration and intelligent automation.

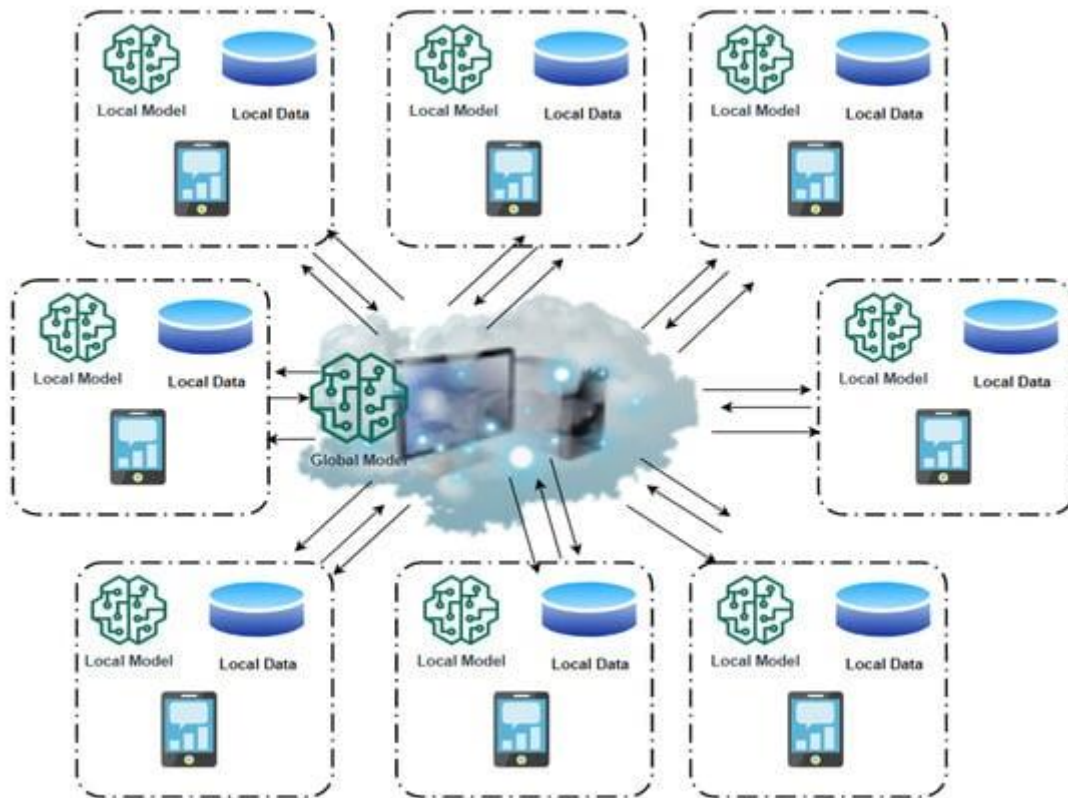
Despite its promise, neuromorphic computing faces several challenges, including the complexity of hardware design, lack of standardized programming models and limited availability of large-scale neuromorphic platforms. However, ongoing research and development by organizations such as Intel, IBM and leading academic institutions continue to push the boundaries of this technology. Emerging neuromorphic chips like Intel Loihi and

IBM TrueNorth demonstrate the feasibility and scalability of brain-inspired computing architectures.

Neuromorphic computing represents a paradigm shift in the evolution of artificial intelligence. By mimicking the efficiency and adaptability of the human brain, it offers a sustainable and powerful alternative to traditional computing architectures. As research and technological advancements continue, neuromorphic systems are expected to play a pivotal role in enabling ultra-efficient AI, transforming industries and shaping the future of intelligent computing.

Mr. K. Ramamoorthy - III B.E. CSE

FEDERATED LEARNING: PRIVACY-PRESERVING AI FOR THE NEXT GENERATION OF DATA SECURITY.



The rapid growth of artificial intelligence (AI) and data-driven applications has significantly transformed industries such as healthcare, finance, smart cities and personalized digital services. However, this progress has also introduced critical challenges related to data privacy, security and regulatory compliance. Traditional machine learning approaches require centralized data collection, where large volumes of sensitive information are transferred and stored in central servers. This centralized paradigm increases the risk of data breaches, unauthorized access and misuse of personal information. To address these concerns, Federated Learning (FL) has emerged as a revolutionary privacy-preserving machine learning framework that enables collaborative model training without sharing raw data.

Federated Learning is a decentralized learning approach in which multiple devices or organizations collaboratively train a shared global model while keeping their data locally stored. Instead of transferring raw data to a central server, each participant trains a local model using its private data and shares only model updates, such as gradients or parameters. These updates are then aggregated to improve a global model without exposing sensitive

information. This approach ensures data privacy, enhances security and complies with data protection regulations such as GDPR and HIPAA.

The growing need for federated learning arises from increasing concerns about data ownership, regulatory compliance and the ethical use of AI. Centralized data storage not only increases vulnerability to cyberattacks but also raises ethical concerns regarding user consent and surveillance. In contrast, federated learning empowers data owners by keeping their data local, thereby reducing the risk of data leakage while still enabling collective intelligence. This paradigm shift allows organizations to collaborate on AI model development without compromising confidentiality or competitive advantage.

Federated learning plays a critical role in domains where data sensitivity is high. In healthcare, hospitals and medical institutions can collaboratively train diagnostic models using patient data without sharing sensitive medical records. This enables improved disease prediction, medical imaging analysis and personalized treatment while maintaining patient privacy. In finance, federated learning enhances fraud detection and credit scoring by allowing institutions to share learning patterns rather than raw transaction data. Similarly, in smart devices and mobile applications, federated learning enables personalized user experiences such as keyboard prediction or voice recognition without transmitting personal data to central servers.

From a technical perspective, federated learning incorporates advanced techniques such as secure aggregation, differential privacy and encryption to ensure that model updates cannot be reverse-engineered to reveal private information. It also addresses challenges such as heterogeneous data distributions, unreliable network connections and limited device resources. Modern federated learning frameworks are designed to be scalable and robust, enabling participation from millions of distributed devices with varying computational capabilities.

The impact of federated learning extends beyond privacy protection. It reduces network bandwidth consumption by transmitting model updates instead of raw datasets, improves system scalability and supports real-time learning at the edge. Furthermore, federated learning aligns with emerging trends such as edge computing, Internet of Things (IoT) and decentralized AI ecosystems. By processing data closer to its source, federated learning reduces latency and enhances system responsiveness.

Despite its advantages, federated learning faces challenges such as communication overhead, model convergence issues and vulnerability to poisoning or inference attacks. Ongoing research focuses on improving robustness, efficiency and fairness in federated systems. Advances in secure multi-party computation, homomorphic encryption and blockchain integration are further strengthening the trust and reliability of federated learning frameworks.

Federated learning represents a transformative approach to artificial intelligence that balances innovation with privacy and security. By enabling collaborative learning without data sharing, it paves the way for a new generation of privacy-preserving AI systems. As data protection regulations become more stringent and public awareness of data privacy grows, federated learning is poised to become a foundational technology for secure, ethical and scalable AI in the future.

Mr. P. Mouliswaran - II B.E. CSE

GREEN COMPUTING AND SUSTAINABLE DATA CENTERS: REDUCING THE CARBON FOOTPRINT OF TECHNOLOGY.



The rapid growth of digital technologies, cloud computing and data-intensive applications has led to an unprecedented expansion of data centers worldwide. While these facilities are essential for supporting modern communication, commerce and innovation, they also consume vast amounts of energy and contribute significantly to global carbon emissions. Green computing and sustainable data center design have therefore emerged as critical strategies for reducing the environmental impact of information and communication technologies (ICT). This abstract examines the principles, technologies and practices that enable data centers to operate more efficiently while minimizing their carbon footprint.

Green computing focuses on the environmentally responsible design, use and disposal of computing resources. In the context of data centers, this includes energy efficient hardware, intelligent workload management, server virtualization and optimized cooling systems. Sustainable data centers increasingly rely on advanced cooling techniques such as liquid cooling, free-air cooling and heat recovery systems to reduce energy waste. In addition, the integration of renewable energy sources such as solar, wind and hydroelectric power plays a crucial role in lowering dependence on fossil fuels and decreasing greenhouse gas emissions.

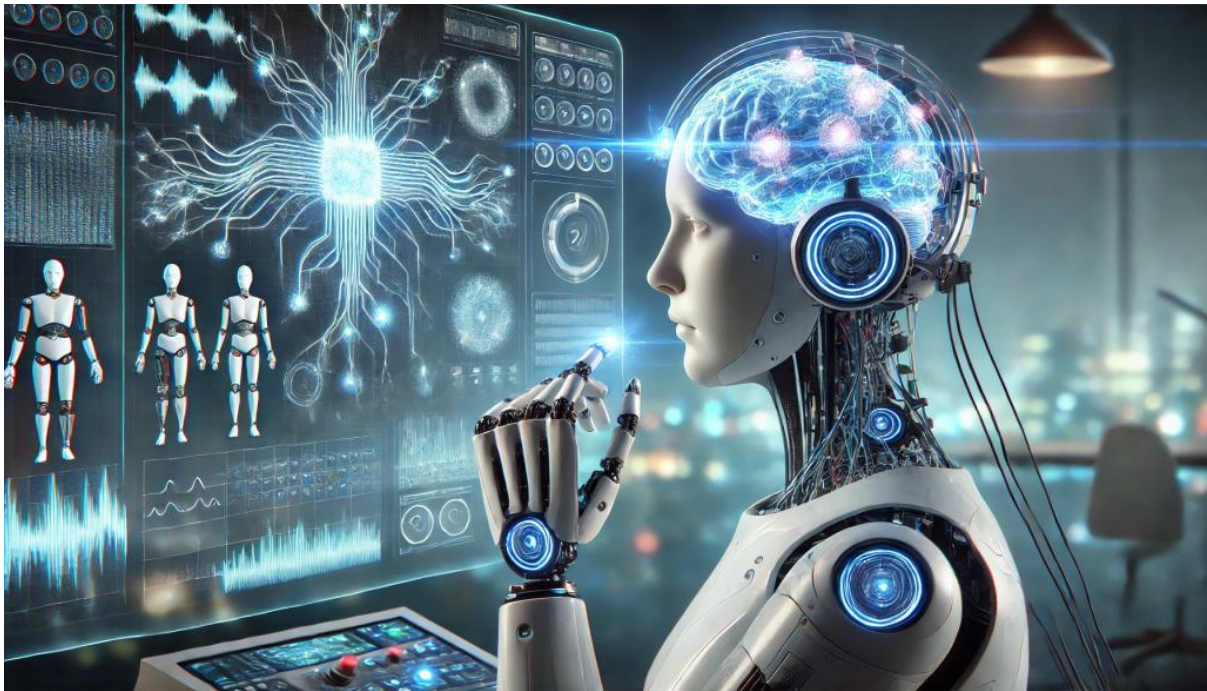
The use of artificial intelligence and machine learning for real-time monitoring and energy optimization further enhances efficiency by dynamically adjusting power usage based

on demand. Metrics such as Power Usage Effectiveness (PUE) are widely adopted to measure and improve energy performance. Beyond operational efficiency, sustainability also involves responsible electronic waste management, longer hardware lifecycles and the use of eco-friendly materials.

This study highlights that achieving sustainable data centers requires a holistic approach that combines technological innovation, policy support and organizational commitment. As global demand for digital services continues to rise, green computing and sustainable data center practices are essential for balancing technological progress with environmental responsibility. By adopting these strategies, the technology sector can significantly reduce its carbon footprint and contribute to long-term environmental sustainability

Mr. S. Anbuselvan - IV B.E. CSE.

BRAIN–COMPUTER INTERFACES (BCI): BRIDGING HUMAN INTELLIGENCE AND MACHINES.



Brain Computer Interfaces (BCIs) represent a rapidly advancing field that aims to establish a direct communication pathway between the human brain and external machines. By translating neural signals into actionable commands, BCIs bridge human intelligence and computational systems, enabling interaction without relying on traditional input devices such as keyboards, mice or touchscreens. This technology holds transformative potential across multiple domains, including healthcare, neuroscience, assistive technologies, robotics and human machine collaboration.

BCIs operate by acquiring brain signals through invasive or non-invasive methods, such as electroencephalography (EEG), electrocorticography (ECoG) or implanted neural sensors. These signals are then processed using signal processing and machine learning algorithms to decode user intent and convert it into commands for computers, prosthetic limb or other devices. Recent advancements in artificial intelligence have significantly improved the accuracy, speed and adaptability of BCI systems, making them more practical for real-world applications.

In the medical field, BCIs offer promising solutions for individuals with neurological disorders or physical disabilities, enabling communication, motor control and rehabilitation for patients with conditions such as paralysis, stroke or neurodegenerative diseases. Beyond healthcare, BCIs are being explored in areas such as gaming, virtual and augmented reality,

cognitive enhancement and smart environments, where seamless interaction between humans and machines can enhance efficiency and user experience.

Despite their potential, BCIs face several challenges, including signal noise, limited bandwidth, high costs, ethical concerns, data privacy issues and the long-term safety of invasive techniques. Addressing these challenges requires interdisciplinary collaboration among neuroscientists, engineers, computer scientists and ethicists. Furthermore, responsible development and regulation are essential to ensure that BCI technologies are safe, accessible and aligned with societal values.

This abstract emphasizes that Brain Computer Interfaces represent a significant step toward integrating human cognition with intelligent machines. As research and technology continue to evolve, BCIs are expected to play a key role in shaping the future of human machine interaction, enhancing human capabilities while maintaining ethical and sustainable innovation.

Mr. K.S. Karventhan - II B.E. CSE

BLOCKCHAIN BEYOND CRYPTOCURRENCY: TRANSFORMING HEALTHCARE, SUPPLY CHAINS AND GOVERNANCE.



Blockchain technology originally developed as the foundational infrastructure for cryptocurrencies, has evolved into a powerful and versatile tool with applications far beyond digital finance. Its core characteristics decentralization, transparency, immutability and security make blockchain a transformative technology for addressing long-standing challenges in sectors such as healthcare, supply chain management and governance. This abstract explores how blockchain is reshaping these domains by enhancing trust, efficiency and accountability.

In healthcare, blockchain enables secure and interoperable management of electronic health records, allowing patients to maintain greater control over their personal data while ensuring data integrity and privacy. By providing a tamper-resistant and transparent framework, blockchain facilitates secure data sharing among healthcare providers, improves clinical decision-making and supports research through reliable data provenance. Additionally, blockchain based systems help combat counterfeit pharmaceuticals by enabling end-to-end traceability of drugs across the supply chain.

Within supply chains, blockchain improves visibility and traceability by recording every transaction and movement of goods on a distributed ledger. This reduces fraud, errors and inefficiencies while enhancing trust among stakeholders. Smart contracts self-executing agreements coded on the blockchain automate processes such as payments, compliance

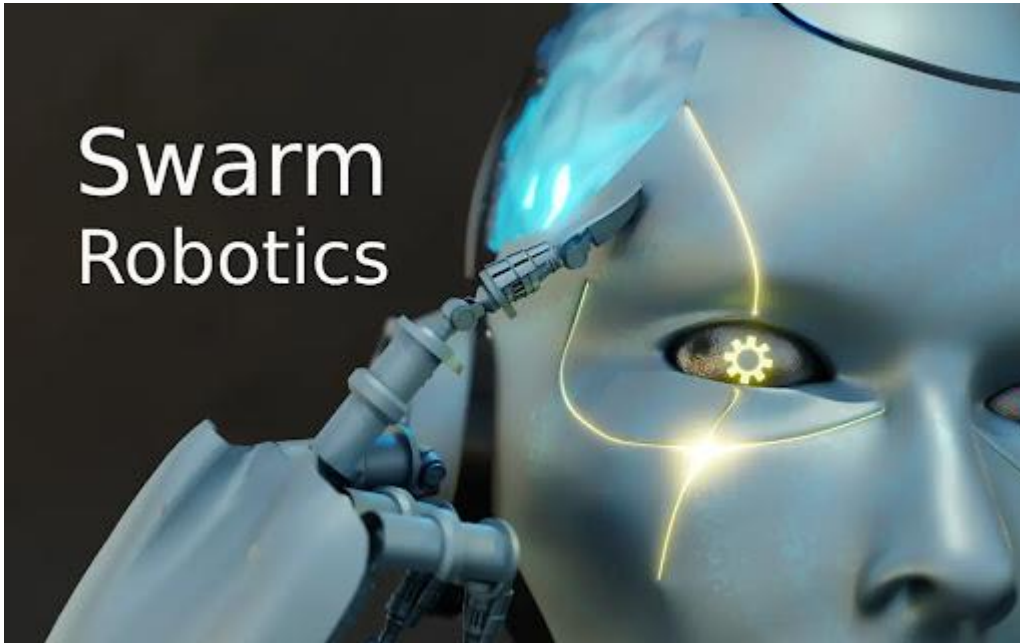
verification and inventory management, leading to faster operations and reduced operational costs. These capabilities are particularly valuable in global supply networks where transparency and coordination are critical.

In governance, blockchain promotes transparency, accountability and citizen trust by enabling secure digital identities, transparent public record management and verifiable electronic voting systems. Decentralized governance models reduce reliance on centralized authorities and minimize the risk of corruption or data manipulation. Despite these advantages, challenges such as scalability, regulatory uncertainty, energy consumption and integration with existing systems remain barriers to widespread adoption.

This abstract concludes that blockchain technology has the potential to fundamentally transform healthcare, supply chains and governance by enabling secure, transparent and decentralized systems. As technological advancements and regulatory frameworks mature, blockchain is poised to become a key enabler of innovation and trust in both public and private sectors beyond its origins in cryptocurrency.

Mr. M.Deepak Sri - II B.E. CSE

AUTONOMOUS SYSTEMS AND SWARM ROBOTICS: THE FUTURE OF INTELLIGENT COORDINATION.



Autonomous systems and swarm robotics represent a rapidly evolving area of artificial intelligence and robotics that focuses on enabling multiple agents to operate independently while coordinating intelligently to achieve complex goals. Inspired by collective behaviors observed in nature such as ant colonies, bird flocks and fish schools, swarm robotics emphasizes decentralized control, local communication and self-organization. Together, these concepts are shaping the future of intelligent coordination across a wide range of applications.

Autonomous systems are designed to perceive their environment, make decisions and act without continuous human intervention. When combined with swarm intelligence, multiple autonomous agents can collaborate efficiently, adapt to dynamic environments and remain robust even in the presence of individual failures. Advances in machine learning, sensor technologies and wireless communication have significantly improved the capabilities of these systems, enabling real-time coordination, task allocation and collective decision-making.

Swarm robotics has promising applications in areas such as environmental monitoring, search and rescue operations, agriculture, space exploration, military defense and smart infrastructure management. Swarms of robots can cover large areas, perform parallel tasks and respond flexibly to changing conditions, often outperforming single, centralized

systems in terms of scalability and resilience. Autonomous vehicle swarms, drone fleets and cooperative industrial robots are emerging examples of this technology in practice.

Despite their potential, autonomous swarms face challenges including coordination complexity, communication limitations, energy efficiency, security risks and ethical considerations related to safety and accountability. Ensuring reliable behavior, preventing unintended emergent actions and integrating human oversight remain critical research concerns.

This abstract highlights that autonomous systems and swarm robotics are redefining how intelligent machines collaborate and interact with the physical world. As research continues to advance, these technologies are expected to play a vital role in building efficient, adaptive and resilient systems capable of addressing complex real-world problems through intelligent coordination.

Mr. I. Sameem Anvar - II B.E. CSE

AI-DRIVEN CYBERSECURITY: PREDICTING AND PREVENTING DIGITAL THREATS IN REAL TIME.



The increasing sophistication, frequency and scale of cyber threats have made traditional, rule-based security systems insufficient for protecting modern digital infrastructures. AI-driven cybersecurity has emerged as a powerful approach to predicting, detecting and preventing cyberattacks in real time by leveraging artificial intelligence, machine learning and advanced data analytics. This abstract explores how AI is transforming cybersecurity from a reactive defense mechanism into a proactive and adaptive security framework.

AI-driven cybersecurity systems analyze vast volumes of network traffic, user behaviour and system logs to identify patterns and anomalies that may indicate malicious activity. Machine learning models, including supervised, unsupervised and deep learning techniques, enable continuous learning from historical and real-time data, allowing systems to detect zero-day attacks, advanced persistent threats and insider risks with greater accuracy. Automation powered by AI also enhances incident response by rapidly isolating threats, reducing response times and minimizing potential damage.

Real-time threat prediction is a key advantage of AI-based security solutions. Predictive models can anticipate attack vectors, assess vulnerabilities and prioritize risks

before breaches occur. Natural language processing further supports threat intelligence by analyzing security reports, dark web data and vulnerability disclosures to provide actionable insights. These capabilities significantly improve an organization's ability to defend against evolving cyber threats in complex and distributed environments such as cloud platforms and the Internet of Things (IoT).

However, AI-driven cybersecurity also faces challenges, including data quality issues, model interpretability, adversarial attacks targeting AI systems and ethical concerns related to privacy and surveillance. Effective deployment requires robust governance, transparent algorithms and skilled human oversight to ensure trust and accountability.

This abstract concludes that AI-driven cybersecurity is essential for safeguarding digital assets in an increasingly connected world. By enabling real-time prediction and prevention of cyber threats, AI enhances resilience, strengthens security posture and represents a critical component of future-ready cybersecurity strategies.

Ms. D. Bhoomika - III- B.E. CSE

METaverse INFRASTRUCTURE: BUILDING THE NEXT GENERATION OF VIRTUAL ECONOMIES.



The metaverse represents an emerging digital paradigm that integrates immersive virtual environments, persistent online spaces and interconnected digital experiences. At the core of this evolution lies metaverse infrastructure the technological foundation required to support large-scale virtual economies, social interactions and digital ownership. This abstract explores the key components and challenges involved in building the next generation of virtual economies within the metaverse.

Metaverse infrastructure is built upon a convergence of technologies, including extended reality (virtual, augmented and mixed reality), high-speed networks such as 5G and edge computing, cloud and distributed computing, artificial intelligence and blockchain. These technologies enable real-time rendering, low-latency interactions, scalable virtual worlds and intelligent non-player agents. Blockchain and decentralized ledger technologies further support virtual economies by enabling digital asset ownership, non fungible tokens (NFTs), secure transactions and interoperable marketplaces across platforms.

Virtual economies within the metaverse allow users to create, trade and monetize digital goods and services, ranging from virtual real estate and fashion to entertainment and professional services. Smart contracts automate economic interactions, ensuring transparency and trust, while AI-driven analytics help manage supply, demand and user engagement.

Interoperability standards and open protocols are critical to enabling seamless movement of assets and identities across different virtual environments.

Despite its potential, metaverse infrastructure faces significant challenges, including scalability, energy consumption, data privacy, security risks, regulatory uncertainty and digital inequality. Ensuring inclusive access, ethical governance and sustainable operation is essential for long-term success. Collaboration among technology providers, policymakers and creators is necessary to establish standards and frameworks that support fair and resilient virtual economies.

This abstract concludes that robust metaverse infrastructure is fundamental to building immersive, secure and sustainable virtual economies. As technological innovation continues to advance, the metaverse is poised to redefine digital interaction and economic participation, shaping the future of work, commerce and social engagement in virtual spaces.

Mr. J.Logeshwaran - III B.E. CSE

QUANTUM INTERNET: THE FUTURE OF ULTRA-SECURE GLOBAL COMMUNICATION.



The quantum internet represents a revolutionary advancement in communication technology, leveraging the principles of quantum mechanics to enable ultra-secure and high-fidelity information exchange on a global scale. Unlike the classical internet, which relies on conventional encryption methods, the quantum internet uses quantum phenomena such as superposition and entanglement to transmit information in fundamentally new ways. This abstract explores the concept, enabling technologies and transformative potential of the quantum internet in shaping the future of secure communication.

At the core of the quantum internet is quantum key distribution (QKD), which allows cryptographic keys to be shared with provable security guaranteed by the laws of physics. Any attempt to intercept or measure quantum states disrupts the transmission, immediately revealing the presence of an eavesdropper. Beyond QKD, quantum teleportation enables the transfer of quantum states between distant nodes without physically transmitting the particles themselves, forming the basis for distributed quantum networks.

The development of a global quantum internet requires advanced infrastructure, including quantum repeaters, entangled photon sources, quantum memories and satellite-based communication systems. Integration with existing classical networks is essential to support hybrid communication models and ensure scalability. Recent research efforts and experimental demonstrations have shown the feasibility of long-distance quantum communication, bringing the vision of a worldwide quantum network closer to reality.

Despite its promise, significant challenges remain, such as signal loss, decoherence, high implementation costs and the need for standardized protocols. Additionally, the deployment of quantum-secure communication raises important policy, ethical and regulatory considerations. Overcoming these challenges will require sustained interdisciplinary collaboration among physicists, engineers, computer scientists and policymakers.

This abstract concludes that the quantum internet has the potential to redefine global communication by offering unprecedented levels of security and reliability. As research and technology mature, it is expected to play a critical role in protecting sensitive data, securing critical infrastructure and supporting future quantum computing and sensing applications.

Mr. Udhayagiri Raja Kullayappa - III B.E. CSE

Prepared By

Verified By